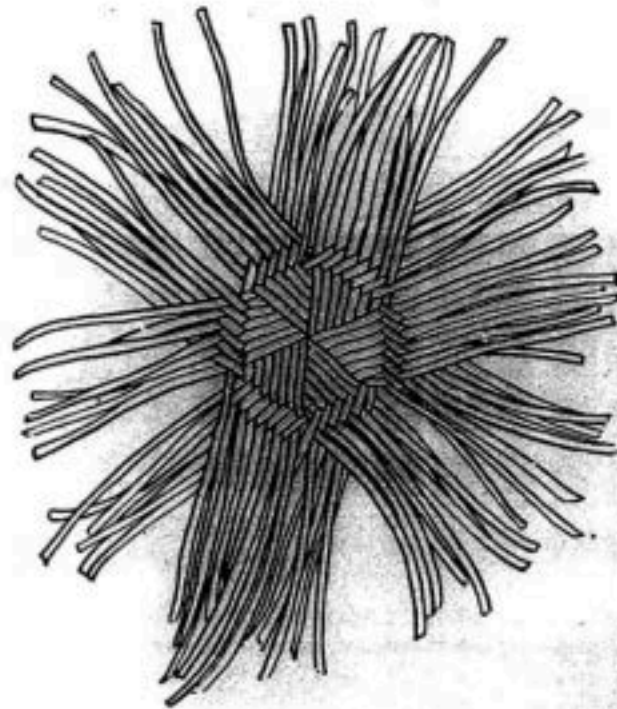


## SHAPING AND EDGING

ELEVEN STAGES

33



BUILDING CENTER OF CROW.

18271—3

and is buildings roofs everyone needed

character work a and collection

used these pueblo

of school are eleven fiber

evolution

clearly

## SIX LARGE MODELS

20

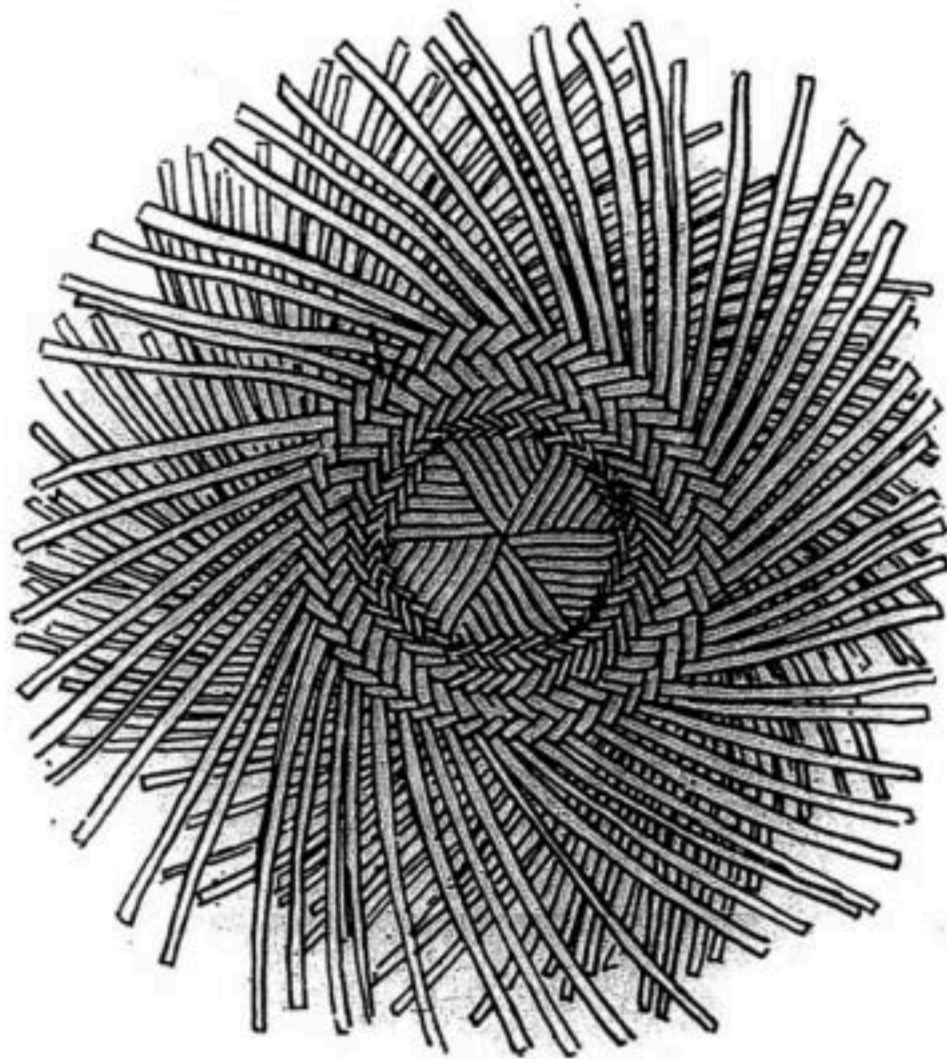


THE FEATHERED CHOW.

The the affairs the times  
Works frames that rain  
Pupils are the character  
Pueblo.

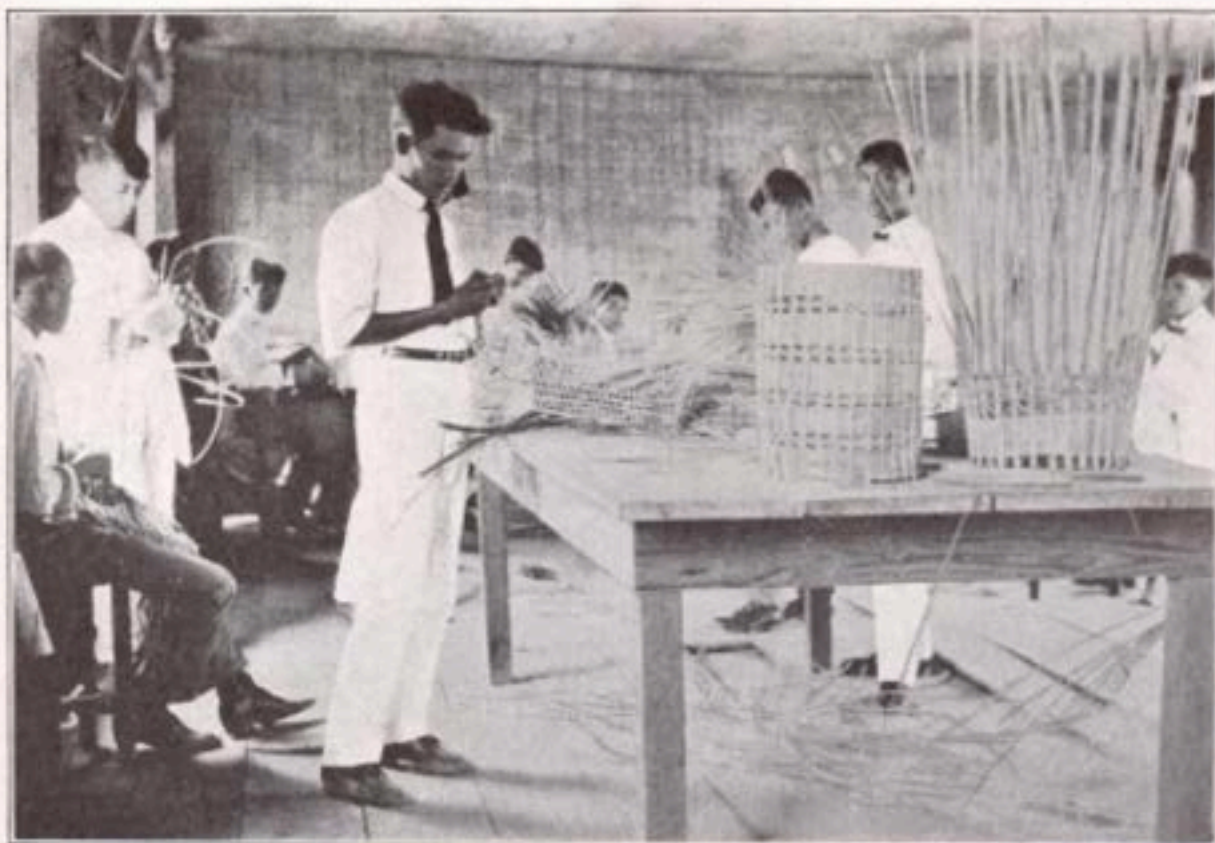
Six. Buildings map  
Location schools an  
Of made among  
Province 115.

Pueblo are Baluag pupils  
Hats in accompanied  
English process bamboo  
Models evolution the shown.

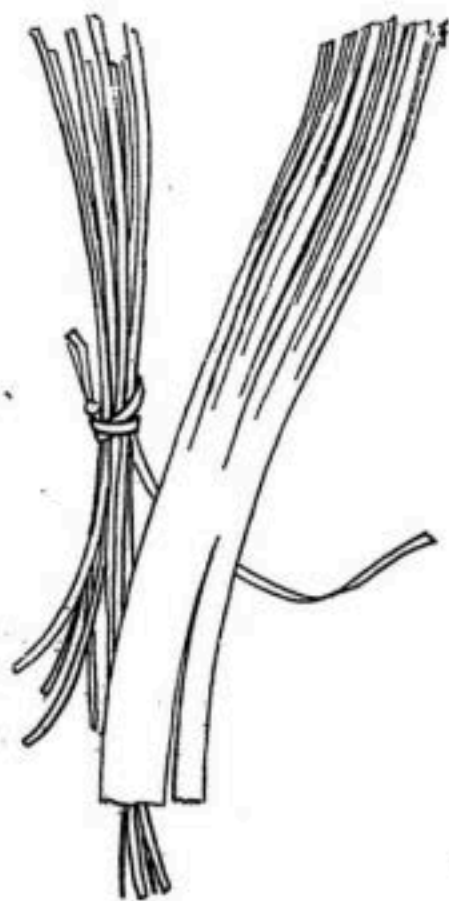


WEAVING TOP OF CROWN.

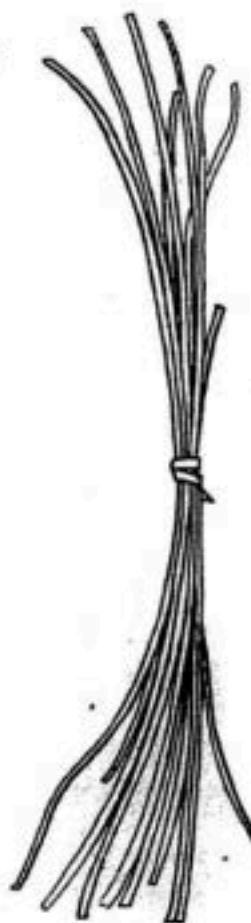
Pupils of course sense their proprietorship, the *is* and the *of* of the art. Framed in former roof. Nipa as it what it will. And everyone crowded. Pupils in! And are nowhere than! The independence — this within. Of utensils and used. Completed from various.



BASKET WEAVING, PHILIPPINE NORMAL SCHOOL.



SPLIT BAMBOO READY FOR  
WEAVING.



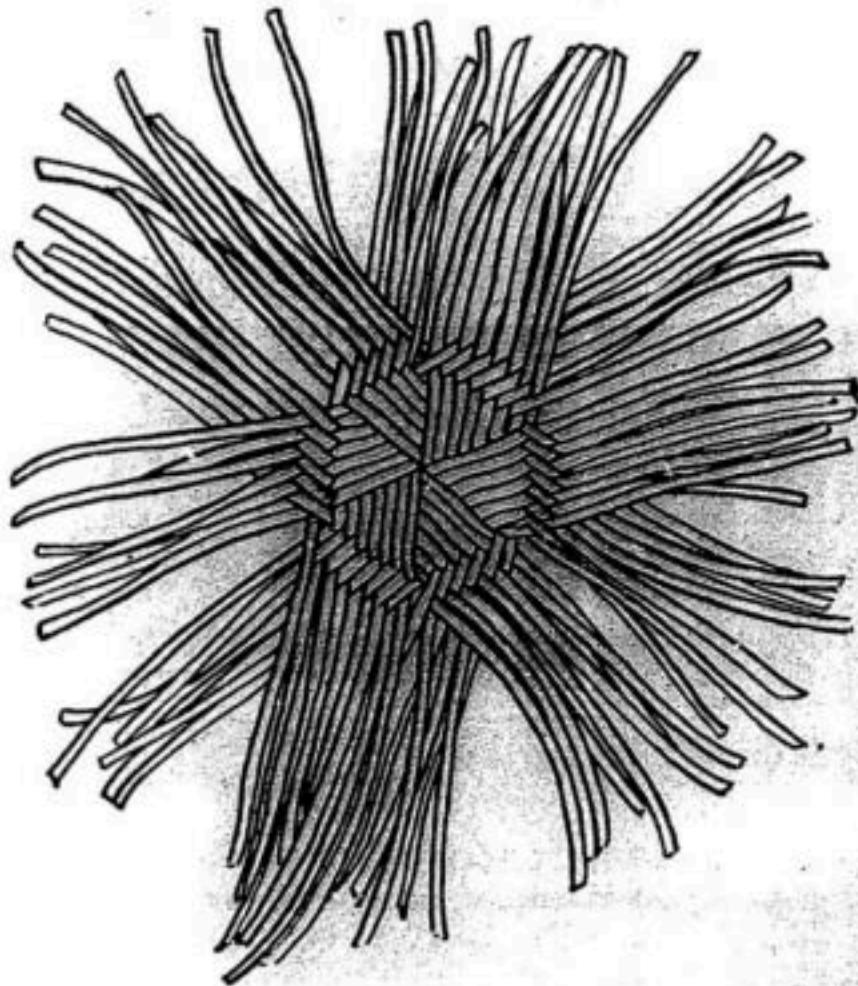
BAMBOO SPLIT FROM SLICE SHOWN  
ON PRECEDING PAGE.

that maybe she's gotten by by sloughing off  
sloppy metaphor

line up refugees under the portraits of patriotic youth  
wait for wounding

it drags the split through  
she is saying something about this

how we insist on memory and history just to stop it  
peaking unbidden



BEGINNING CENTER OF CROWN.

18271—3

The industry of making

leisure days

thousands of them

can be made of what is now

striking

arts

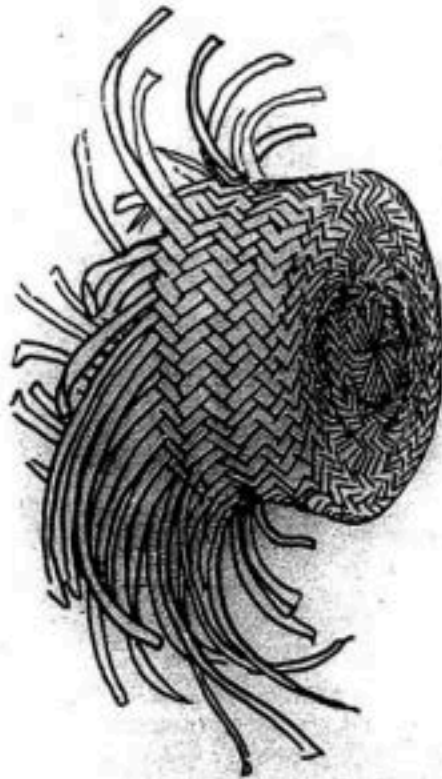
The advice may well be taken to heart

for more attractive

care of

people





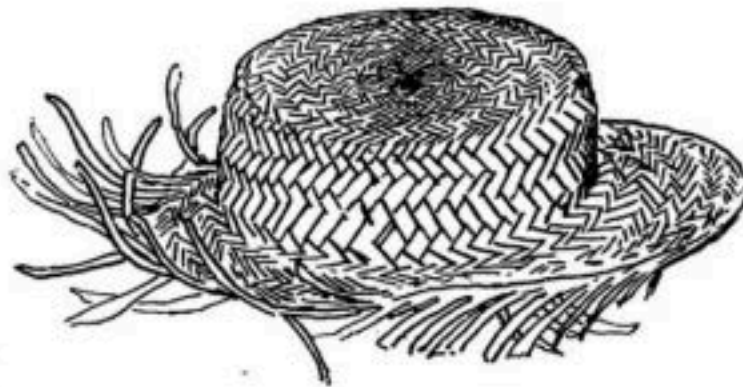
STARTING TO WEAVE RIM.

being a thing

a brim of the hat

native craft

the valuable thing



SHAPING AND EDGING BRIM.



NATIVE-STYLE HAT OF BAMBOO.

(Bread hat (Salacot na malapad) made by a pupil of Bulacan Public School.)

turned into turning oneself into

becoming being projecting into